

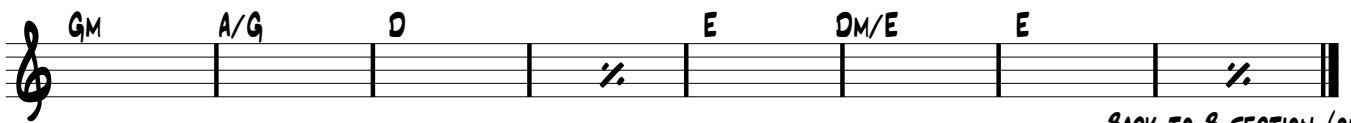
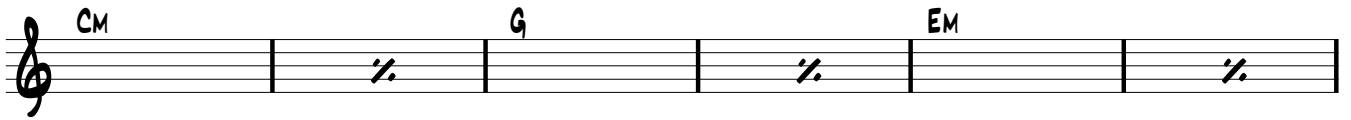
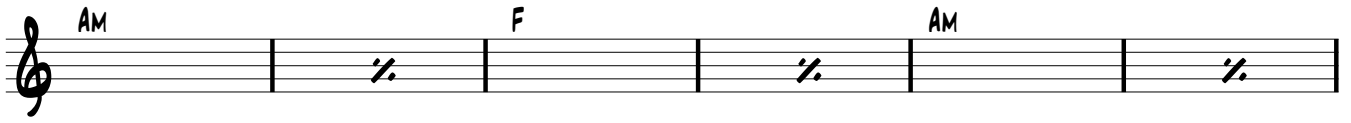
AMONDALA

PHIL ALEXANDER

The musical score for "AMONDALA" is written in 3/4 time and consists of ten staves of music. The melody is primarily composed of eighth and quarter notes, often with slurs and ties. The guitar accompaniment is indicated by chord symbols placed above the staff. The key signature has one sharp (F#), and the time signature is 3/4. The score includes a first and second ending in the third staff. The final measure of the piece is a double bar line with repeat dots.

Chord symbols used in the score include: EM, F#M, GM, A, DM, CM, AM, FM, E, C, DM, G, F, C, EM, GM, A/G, D, E, DM/E, D, D, BM, G, AM, F, C, G, E, B, D, BM, GM, Bb, F, G, D, AM, and E.

AMONDALA



BACK TO B SECTION (ONCE)
THEN C, THEN A TO FINISH